

Integrated Sustainable Development Nepal Gaur-5, Rautahat (I.S.D. - Nepal) Profile

A. Back Ground

Integrated sustainable Development-Nepal (ISD-Nepal) is a non-governmental Organization established in Rautahat in 2002 (2059 B.S.) by a team of active, young & diversified professional having multisectoral background of Forestry, Agriculture, Engineering, Sociology, Arts & Law. ISD-Nepal is a non-political, non-profit, non governmental organization committed to work jointly with rural and needy communities particularly in the field of sustainable development and conservation of natural resources and environment.

B.Introductive description of the organization

- (1) **Name and address of organization**
Name = Integrated Sustainable Development Nepal
Address = Gaur, 5 Rautahat
- (2) **Name and address of office where the organization is registered.**
Name = District Administration office
Address = Gaur, Rautahat
Registration no. = 714
Registration date = 2059/8/13
- (3) **Name and address of office where the organization is affiliated.**
Name = Social Welfare council
Affiliated no. = 14192
Affiliated date = 2059/9/18
- (4) **Address of office = Gaur municipality - 5, Rautahat**
- (5) **Contact Phone no. =**
Mobile no. = 9845115376, 9845057674
Office no. = 055- 690711
- (6) **Email Address = isdnepal@gmail.com**

C.Vision

"A Self Sustained & Empowered Community"

D. Mission

To develop model communities through development of institution, allocation & utilization of local available resources for socio-economic and ecological development.

E.Value

- ⊖ Local people have a lot of knowledge and experiences the need small support for implementation.
- ⊖ Participatory approach is essential for local development.
- ⊖ Public audit is an important and reliable means of transparency.
- ⊖ Transparency is a strong tool for sustainable utilization of local resources.

F.Challenges

Poverty, out- migration of active population and degradation of social and environment conditions in the region are the main challenges to be addressed.

G.Strategies

- ⊖ *Working in / with rural, deprived, disadvantage community (Dalit, Janjati, Deprived groups, Women & socially excluded communities).*
- ⊖ *Minimization of issues related to agriculture, forestry and environment.*
- ⊖ *Encourage to the local communities for effective and efficient utilization of local / natural resources taping indigenous technology.*
- ⊖ *Focus on sustainable development through integration of health, education, rural community infrastructure development, information system, gender balance, occupation, environment aspects.*
- ⊖ *Planning and implementation of programs on basis of people's participation.*
- ⊖ *Increment of the equal participation of men and women in each and every aspect of program*
- ⊖ *Planning implementation, monitoring review etc.*
- ⊖ *To bring the positive changes in community from the implemented programs.*
- ⊖ *Implementation of site specific programs.*
- ⊖ *Maintain transparency about financial activities among local cases/communities.*
- ⊖ *Implementation of long-term effect programs in replicable way.*
- ⊖ *Conduction of programs on the basis of detail involvement of rural discussion.*
- ⊖ *Conduction of programs after required collaboration / co-ordination with GO, NGOs, INGOS and Funding agencies.*

H.Management

ISD-Nepal's Executive Board, which is elected by an annual general assembly of members, sets policies and reviews project performance periodically. The director is appointed by the board and is responsible for the management of ISD-Nepal's overall programmes. The project coordination committee (PCC) of director and senior management staff provides recommendations on policy and programme strategy to the board and is responsible for sharing ideas and experiences within

organization, publicity and representing the concern of field staff. All the records of income & expenditure of a year are audited and kept transparent within the same year.

Field offices are established in working area which makes easy to monitoring & supervision of the programs in the field. Extension workers, who live at village level, build good and strong relation between central and village.

The contact office of ISD-Nepal is established at Gaur, Rautahat for the regular co-ordination and co-operation with GOs, NGOs, INGOs and other line agencies for the successful implementation of programmes.

I.Objective

ISD-Nepal is alive by promising to fulfill the following objectives:-

Long term Objectives:

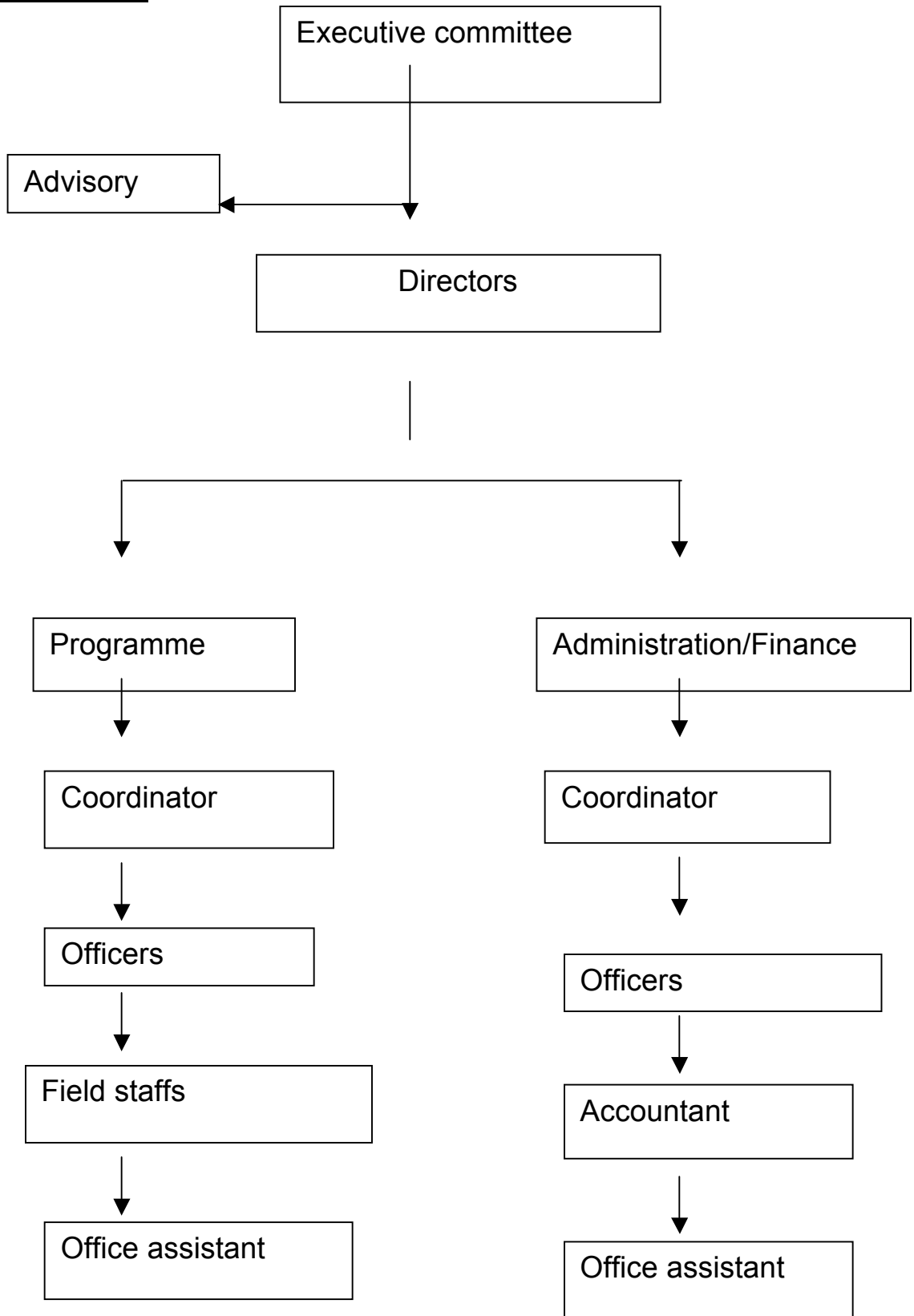
To establish a perfect public society based on gender balance by proper Evaluation & Research of policies and programmes related to forestry, agriculture, environment and health as well as proper programme planning, implementation, monitoring and review with participatory way.

Specific Objectives:

- ☉ *To institutionalize the systems of integrated Agriculture, Forestry & Economic development.*
- ☉ *To facilitate & focus on Poverty alleviation of rural community through income generating activities based on local available resources.*
- ☉ *To focus on integrated sustainable development approach.*
- ☉ *To produce high yield variety of seeds by participatory reproductive programmes planned on the basis of people's choice species through Bio-diversity conservation.*
- ☉ *To undertake research works in agriculture, forestry & environmental related issues.*
- ☉ *To develop new agro forestry technology & its extension to community level.*
- ☉ *To focus on the capacity building aspects of the community by proper skill development training programmes through participatory approach.*
- ☉ *To minimize the fuel crises in rural community through proper fuel wood & fodder management in agro-forestry systems and facilitate and train the rural community for using fuel efficient technologies (bio-gas, bee-hive briquettes, improved stoves...).*
- ☉ *To develop an effective networking system / marketing of rural community products for their timely and effective socio-economic development.*
- ☉ *To interlink the private and agro-forestry schemes to various other community activities such as improved livestock farming rural infrastructure*

development; soil and water conservation for healthy and clean environment, agro-forestry based income generation and non-formal education.

J. Organizational Chart



K.Experience of the Organization :

a. past experience

The ISD-Nepal has success fully completed interventions as follows

A. Developmen programs

- | | |
|--|------------------------|
| 1. Informal education
(District education office Gour Rautahat) | 2060/061 &
2061/062 |
| 2. <i>Agriculture extension work :</i>
(CGISP – janakpur Mujelia) | 2061/2062 |
| 3. Kurilo Kheti
(District Forest office chandranigahpur) | 2061/2062 |
| 4. Vegetable kheti & Bakhra palan
(APPSP) | 2061/2062 |
| 5. Plantation of fruit
(APPSP) | 2062/2063 |
| 6. Kurilo Kheti
(District Forest office chandranigahpur) | 2062/2063 |

B. Tranings / Meetings :

	Number	Annual year
1 Pcps meeting	8	2061/2062
2. Masement of nursery	12	2061/2062
3. Goat farming Traning training	7	2062/2063
4. Environment protection training	1	2061/2062
5. Crop management & IPM traning	12	2062/2063
6. Kurilo Kheti training	1	2061/2062
7. On the spot training (Vege,Pulses,Cereals)	24	2061/2062
8. Sub centre level farmers meeting	8	2061/2062
9. Group Level farmer"s samiksha meeting	2	2061/2062
		2062/2063

C. Visit :

District level farmers visit	1	2061/2062
------------------------------	---	-----------

D. Safety water and sanitation training

Donor - Unicef

2064/2065

E. Actively Engaging Rautahat Youth in Community Stabilization CDF Program in 15th VDCs

2065/ 2066

Donar : - USAID / OTI / Chemonics International, Baluwatar, Kathmandu

F. Improved life of poor

Donor :- APPSP

b. Conducting Programme

2064 to 2066

**(ii) Actively Engaging Rautahat Youth for Peace & Development
2065/2066**

**Donar : - USAID / OTI / Chemonics International
Baluwatar, Kathmandu**

ISD-N has well networking to do programs work in 35th VDCs of Rautahat district. There are 45 Facilitators networking in grassroot level