

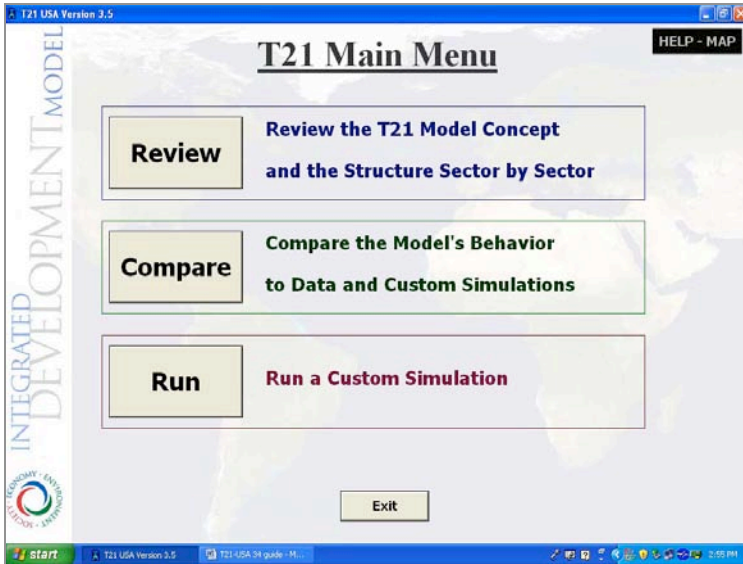


Version 3.5

T21-USA Run Only User Guide

The T21-USA interface is optimized for 1024x768 screen resolution.
A different setting may result in distorted visualization of the interface.

Copyright © 2005 Millennium Institute, All Rights Reserved

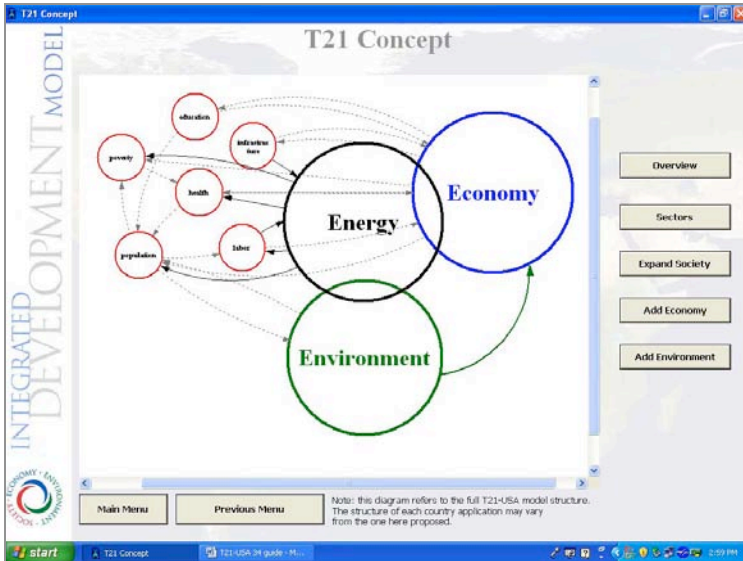


Section 1: Model Review

Select **Review** to explore the structure of the model and the major feedback loops represented.

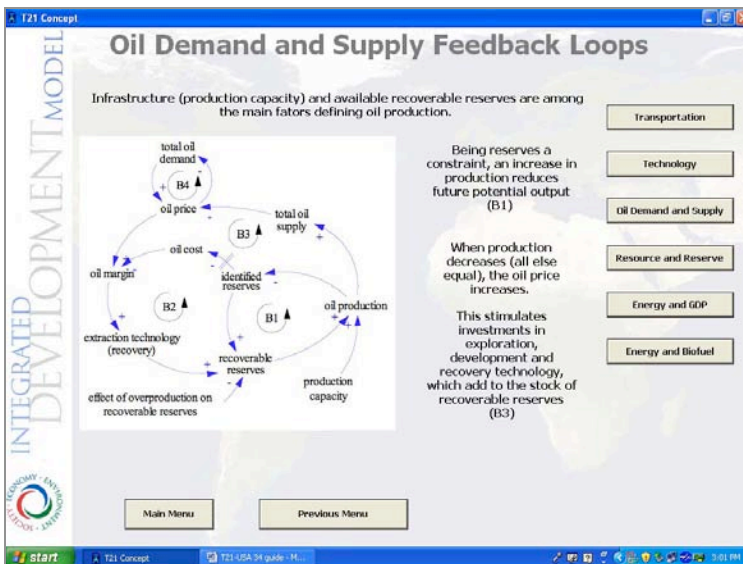
Choose **Compare** to access the comparison between simulated and historical values.

Click on **Run** to set your own assumptions and policies and run custom simulations.

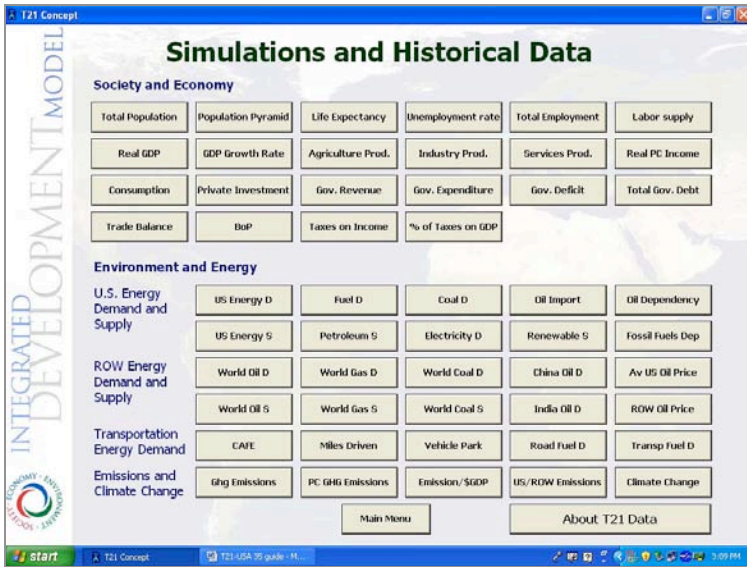


Choose **Concept** to explore the architecture of the model. T21-USA is composed by four main spheres: Society, Economy, Environment and Energy. Each of these spheres can be broken down in sectors, and each sector is composed by modules.

The screen **T21 Concept** shows spheres, sectors and their interconnections.

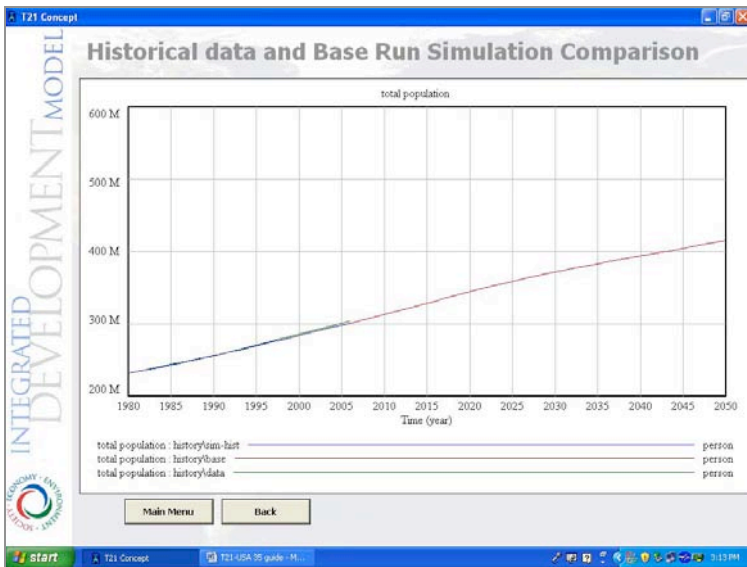


Click on **Loops** to review in details the most important feedback loops governing the behavior of the model.



Section 2: Comparison with Historical Data

Select **Compare** to enter the *Simulation and Historical Data* section. Here you can compare the behaviour of selected indicators to historical data.

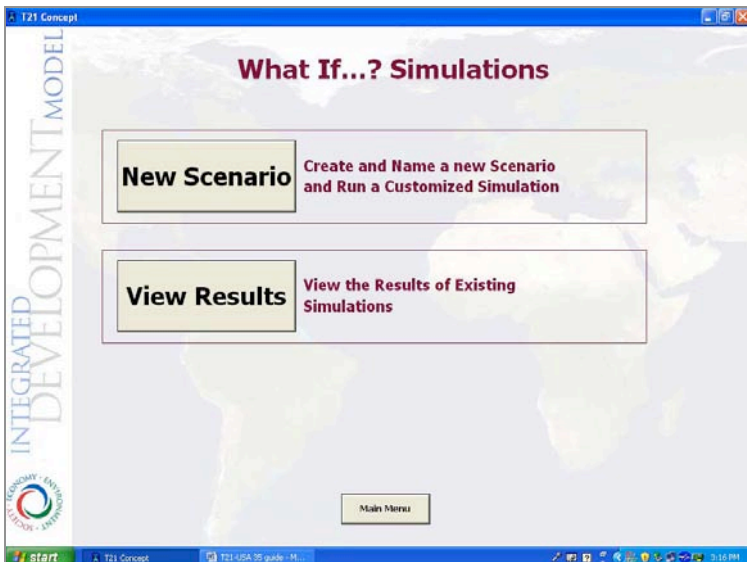


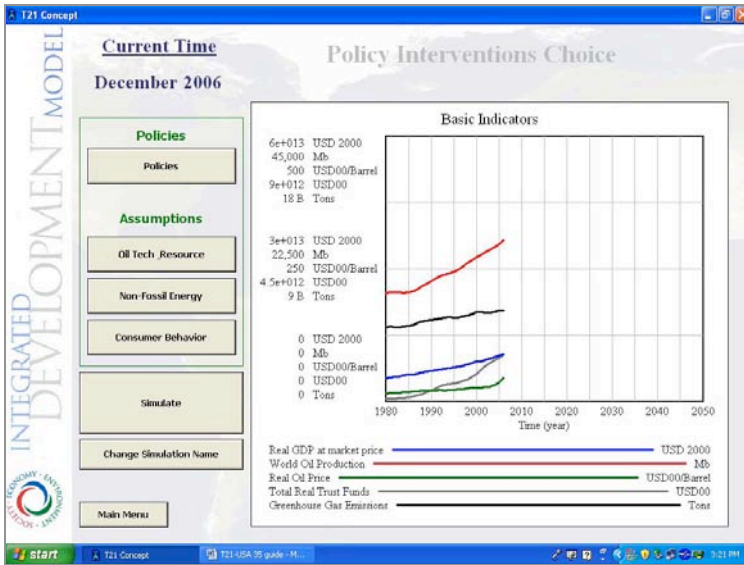
The graph shown in the *Historical data and Base Run Simulation Comparison* contains two lines: a red one (historical data, usually available from 1980 to 2006), and a blue one (simulated values).

Section 3: "What If" Simulation

Select **Run** from the *Main Menu* to enter the model simulation section.

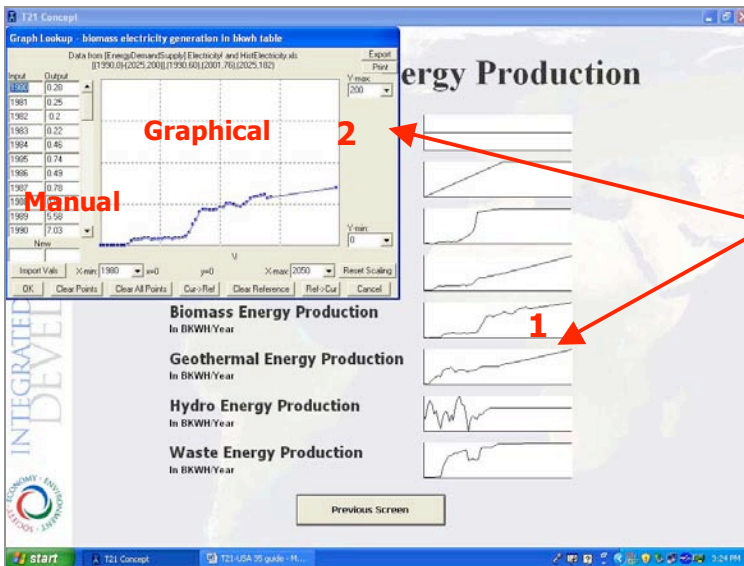
From the introductory screen you can simulate new scenarios or access the results of existing simulations.





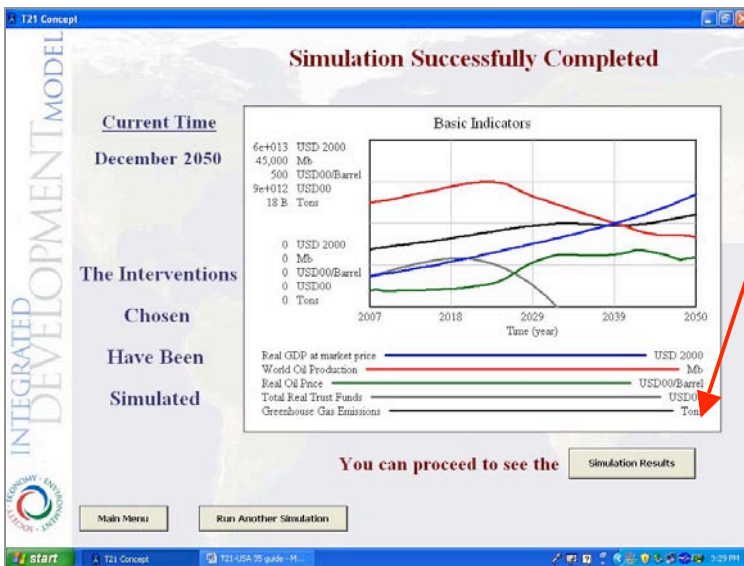
When selecting *New Scenario* you will be asked to create a new simulation in order to proceed to the **Policy Interventions Choice**.

Here you can simulate various energy related assumptions and policies.



Once you have selected a specific category, custom values can be introduced into T21.

In order to change a value, click on the graph (1) and window will pop up (2). Here you can introduce values in two ways: manually or graphically.



Select **Simulate** once you are ready to proceed with the simulation of the model. As soon as the model has reached the final simulation time (2050), you can proceed to the **Simulation Results**.

Either select **View Results** from the "What If... Simulations" menu, or choose **Simulation Results** from the *Simulation* screen to enter the section *Simulation Analysis*. Here you can load various simulations, analyze causal relationships with Causal Tracing and compare the behavior of various indicators.



Thank you for you interest, we look forward to receiving your comments and suggestions.